



Advanced Snowmobile
FOUNDER

Recap and information from the
Inaugural Advanced Snowmobile
Collegiate Competition.

WHAT IS ADVANCED SNOWMOBILE?

- The only international collegiate competition that focuses on improving engine/vehicle emissions.
- Provides a training ground and a stage for students interested in engine emissions, vehicle emissions and powersports.
- Is a venue for industry partners to interact, and recruit top talent with relevant experience.
- A low overhead organization, all contributions are used to fund the event, there are no paid positions.



ADVANCED SNOWMOBILE TIMELINE

- February 2025; Started Volunteer Meetings, venue confirmed for 2026 event.
- April 2025; Incorporated in the State of Wisconsin.
- April 2025; Filed with IRS recognition as a 501(c)(3), Non-profit organization.
- June 2025; Draft Rules to Student Teams.
- February 8-12, 2026; Inaugural Advanced Snowmobile Event, Eagle River, WI.
- February 17-21, 2027; Second Advanced Snowmobile Event, Eagle River, WI.

2026 Results

Team #	Team Name	Team Nickname	Abstract	Technical Paper	Technical Presentation	Business Presentation	Endurance	In-Service Emissions	Fuel Economy	Industry Impact Points	Acceleration	Objective Handling	Subjective Handling	Technical Inspection	Objective Noise	Cold Start	Vehicle Weight	First Year Innovation	Penalties
1	Rochester Institute of Technology	RIT	50.0	91.0	68.4	60.8	200.0	65.6	98.6	18.0	93.9	27.5	33.3	50.0	46.4	50.0	45.6	0.0	0.0
2	Clarkson University	Clarkson	50.0	112.5	45.2	90.4	200.0	92.0	98.9	5.0	135.4	100.0	10.0	50.0	166.1	50.0	42.6	0.0	0.0
3	École de Technologie Supérieure	ETS	50.0	66.4	67.2	61.4	0.0	100.0	0.0	5.0	7.5	0.0	0.0	50.0	200.0	50.0	2.5	20.0	0.0
4	Kettering University	Kettering	50.0	87.9	62.9	75.2	200.0	94.0	100.0	5.0	76.5	5.0	21.2	50.0	109.4	50.0	43.2	0.0	-10.0
5	Michigan Tech University	MTU	50.0	140.0	93.3	100.0	200.0	70.5	94.3	100.0	119.9	68.9	39.6	50.0	120.1	50.0	44.0	0.0	0.0
6	University of Wisconsin - Platteville	Platteville	50.0	98.4	70.7	87.7	200.0	61.0	82.6	99.7	130.1	58.0	50.0	50.0	93.0	50.0	44.7	0.0	0.0
7	North Dakota State University	NDSU	50.0	0.0	5.0	5.0	200.0	61.2	98.3	17.8	141.2	61.5	37.2	50.0	32.0	2.5	50.0	0.0	-25.0
9	South Dakota School of Mines & Tech	SDSMT	50.0	0.0	100.0	0.0	200.0	61.4	74.7	18.2	150.0	62.7	15.1	50.0	0.0	50.0	46.4	0.0	-10.0
10	University of Minnesota - Duluth	Duluth	50.0	55.3	14.0	45.3	10.0	5.0	5.0	16.5	8.6	59.4	2.5	50.0	77.3	50.0	45.2	0.0	-25.0
Max Points			50	150	100	100	200	100	100	100	150	100	50	50	200	50	50	40	0

Totals	Rank	Team Nickname
999.0	5	RIT
1248.2	2	Clarkson
680.0	8	ETS
1020.3	4	Kettering
1340.6	1	MTU
1225.8	3	Platteville
786.6	7	NDSU
868.4	6	SDSMT
469.1	9	Duluth

Overall	
1st Place - MacLean Fogg	Michigan Tech University
2nd Place - MacLean Fogg	Clarkson University
3rd Place - MacLean Fogg	University of Wisconsin - Platteville

Awards	
Sound - Polaris	École de Technologie Supérieure
Emissions - Ski-Doo	Michigan Tech University
Fastest Acceleration - Arctic Cat	South Dakota School of Mines & Tech
Fastest Objective Handling - Polaris	Clarkson University
Design Paper - Ski-Doo	Michigan Tech University
Design Presentation - Ski-Doo	South Dakota School of Mines & Tech
Sales Presentation - ISMA	Michigan Tech University
Overall Innovation - GS	École de Technologie Supérieure
Fuel Economy - Horiba	Kettering University

Spreadsheet Guidelines
At the bottom of each sheet, a brief description of scoring is available. These are pulled directly from the rules.
Line items with this backing color are manual inputs by the scoring judge, all others are static, blank, or calculated
Line items with this backing color have been manually overwritten due to a decision made by the judges
This spreadsheet will only work with modern versions of Excel due to array calculations.
A majority of cells have been designed to look blank if there was an error in the calculation. This generally occurs when there is an incomplete or insufficient dataset for the calculations to run properly.

Link to [Results Folder](#)

2027 DEADLINES

ALL DEADLINES ARE ON THE DAY INDICATED AT MIDNIGHT CST.

Abstract	Sept 30 th
Team Registration	Sept 30 th
Individual Registration	Dec 20 th
Technical Paper	Jan 3 rd , 27
Business Presentation	Feb 14 th , 27
Engineering Presentation	Feb 14 th , 27

2027 EVENT SCHEDULE

ONSITE OPERATIONS

Time	Wednesday February 17, 2027	Thursday February 18, 2027	Friday February 19, 2027	Saturday February 20, 2027	Sunday February 21, 2027
7:00		Cold Start			
7:30					
8:00	Administration & Team Registration Teams move into paddocks.				
8:30		Endurance	Subjective Handling	Objective Noise	
9:00		Sales Presentation	Design Presentation	In-Service Emissions	
9:30		Makeup Inspections	In-Service Emissions		
10:00	Inspection				Reserved
10:30		Advisor Meeting			
11:00					
11:30					
12:00	Lunch Break	Lunch (Provided)	Lunch (Provided)	Lunch (Provided)	Lunch
12:30					
13:00					
13:30					
14:00				Clean up/Move out of Bays	Reserved
14:30	Inspection	In-Service Emissions	Objective Noise		
15:00		Design Presentation	Design Presentation		
15:30		Makeup Inspections	In-Service Emissions		
16:00					
16:30				Awards Ceremony	
17:00		Sponsor Networking			
17:30					
18:00	Volunteer Dinner			Everyone Offsite	
18:30					
19:00		Acceleration & Objective Handling	Team Dinner w/Rule Discussion		
19:30					
20:00					
20:30					
21:00					

Wednesday, All Snowmobiles must be through check-in by 3pm. All Snowmobiles must be through inspection and parked on track by 4:30pm



PHOTOS & VIDEOS

Photos Link: <https://danielnehmer.smugmug.com/2026-Advanced-Snowmobile/n-ZzP2D9>

Password: @Eagle River 2026

Video Link: <https://f.io/513CJ6M7>

MEDIA

WXPR Radio

[WJFW TV 12](#)



INDUSTRY SUPPORT

Volunteer Support

In order to run the competition with multiple events running simultaneously we need roughly 60 volunteers on site. The volunteers are spread over Presentation Judging, Technical Inspection, Dynamic Events and Administration. We welcome and encourage sponsors to get employees started early as volunteers as the better prepared they are before the event the more they will be able to contribute, engage with the students, and enjoy what they are doing.

Sponsorship Opportunities

Sponsorships come in several varieties. The most obvious is financial contributions to the Advanced Snowmobile organization to help fund the costs associated with running the event. Directed financial contributions can be all or a portion of a sponsorship to be used for specific expenses such as a named award, one or more meals, volunteer and student spirit wear. Indirect contributions can be in the form of materials for the event, volunteers, equipment, etc. We would be happy to discuss specific options with you or your organization.

2026 SPONSORS



MACLEAN-FOGG



POLARIS



Michigan Technological University



Your Name Here!



HORIBA





2026 Sponsorship Packet

Advanced Snowmobile@gmail.com
 +1 (414) - 465 - 8261
 EIN: 33-4618252

	PLATINUM \$20,000 TOTAL	GOLD \$15,000 TOTAL	SILVER \$10,000 TOTAL	BRONZE \$5,000 TOTAL	COPPER \$2,000 TOTAL
DONATION	\$10,000 Cash Minimum \$20,000 Cash & In-Kind Total	\$7,500 Cash Minimum \$15,000 Cash & In-Kind Total	\$5,000 Cash Minimum \$10,000 Cash & In-Kind Total	\$2,500 Cash Minimum \$5,000 Cash & In-Kind Total	\$1,000 Cash Minimum \$2,000 Cash & In-Kind Total
RETURN	Industry Night Presentation Career Fair Exclusive Access Designated Donations* Platinum Website Branding Platinum Social Media Branding Platinum Paddock Branding	Career Fair Exclusive Access Designated Donations* Gold Website Branding Gold Social Media Branding Gold Paddock Branding	Career Fair Exclusive Access Silver Website Branding Silver Social Media Branding Silver Paddock Branding	Bronze Website Branding Bronze Social Media Branding Bronze Paddock Branding	Copper Website Branding Copper Social Media Branding

Industry Night – Community networking event to hear from industry leaders and sponsors.

Career Fair – Exclusive event for Platinum, Gold, & Silver sponsors to recruit top collegiate talent. May be purchased separately for \$500.

Designated Donations* – Dictate what your donation supports: a meal, volunteer/student apparel, event prize, or other of your choice.

In Kind Donations: Donations in the form of equipment usage/rental, volunteer time, or adjacent value.



Advanced Snowmobile, LTD
 7716 Overlook Drive
 Greendale, WI








THANK YOU

Advanced Snowmobile, Ltd.

 VAN PHIFER

 +1 (414) 465-8261

 AdvancedSnowmobile@gmail.com

ORGANIZATION INFORMATION

- Advanced Snowmobile, Ltd.
- EIN: 33-4618252
- Mailing Address: 7716 Overlook Drive, Greendale, WI 53129
- Point of Contact; Van Phifer, President
- 1 (414) 465-8261
- AdvancedSnowmobile@gmail.com
- Event Location; [World Championship Derby Complex – WCDC](#), 1311 N Railroad St, Eagle River, WI 54521
- 2027 Event Dates; February 17th-21st.

2026 DERBY OVAL HANDLING COURSE VS SNOCROSS?



2026 NOISE AND EMISSIONS LOOP

- Approximately 0.6 miles (1 km)
 - Log 5 laps for scoring
 - Will utilize speed control signs

• Start/Finish

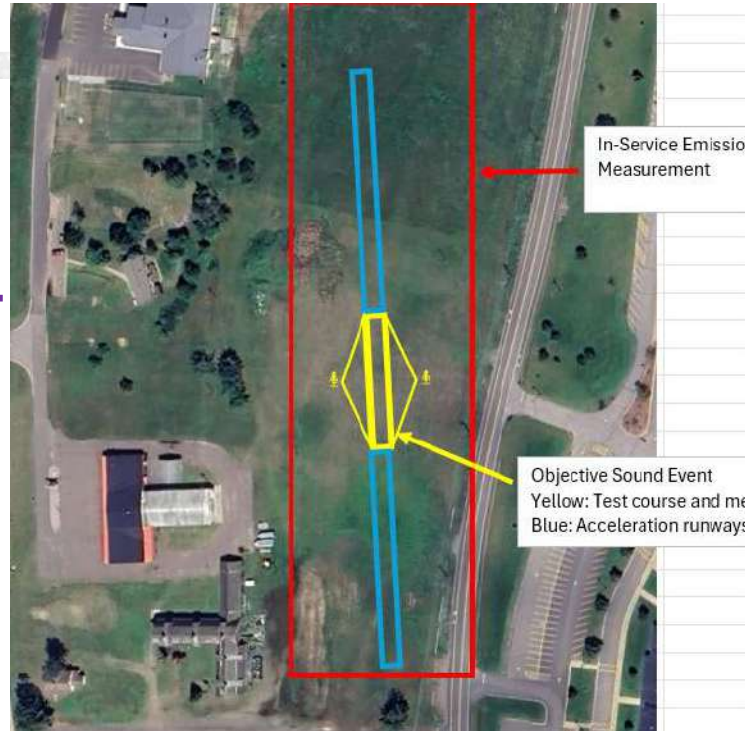
• Packed snow 6" deep x 10' wide

EMISSIONS Loop (CCW direction)

- Turn-around wide spot for end of test

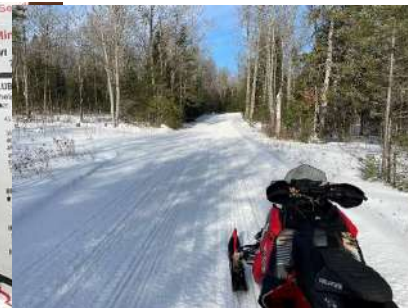
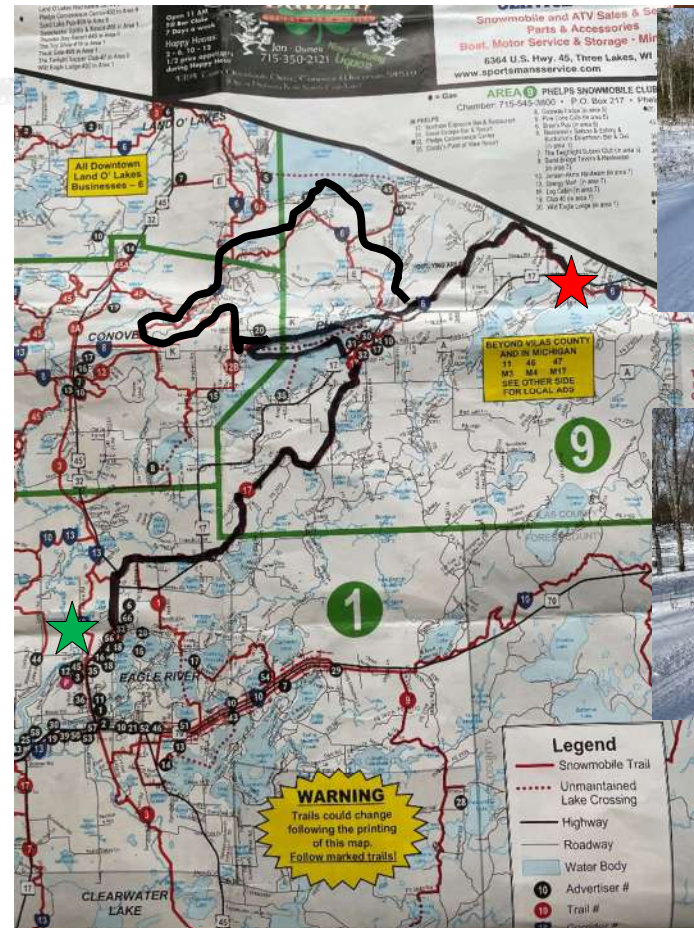
NOISE Course

- 150'x16-20'
- 275' acceleration ramps
- No reflecting objects in yellow diamond
- Microphones 50' off centerline



PROPOSED 2026 100MI ENDURANCE COURSE

- Starting at Derby Oval:
 - 5 “warm up” laps on “snow” oval
 - Exit the oval, Stage on Noise course
 - Follow Trail 17 North to Phelps
 - Follow Trail 6 Phelps to Sand Lake Pub
 - Restrooms, turn-around, assistance
 - Take Trail loop 6 north of Twin Lake
 - Take Trail 12 for 2 laps on Twin Lake
 - Take Trail #17 back to Derby Track
 - Goal is 90-100Mi



Trail 17

